

Fig.1

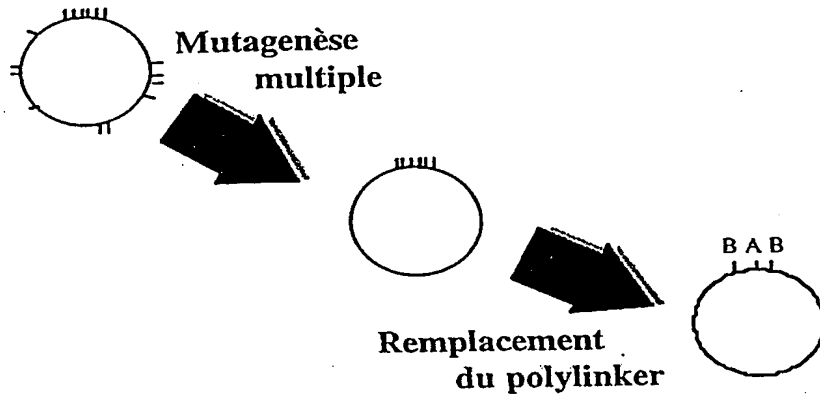
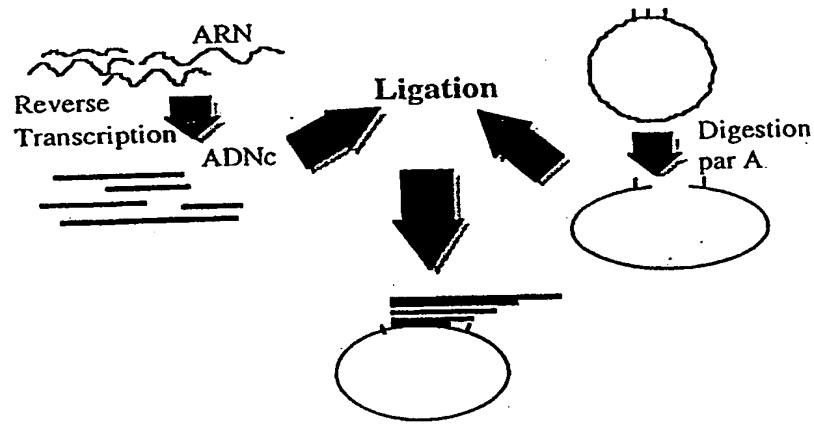


Fig.2



002090" TET8560

Fig.3

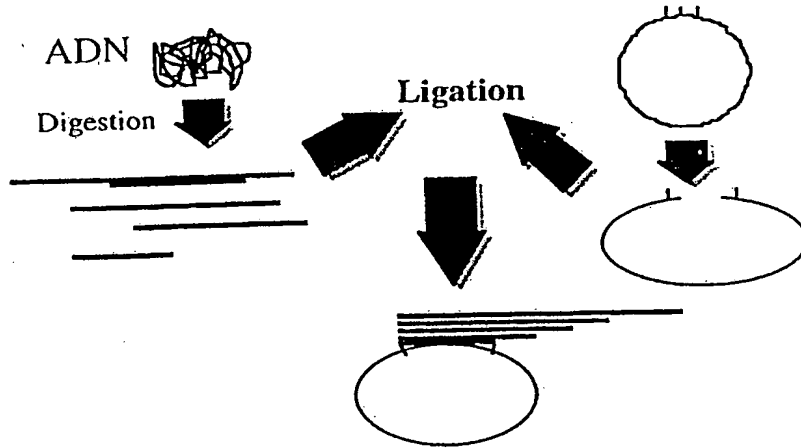
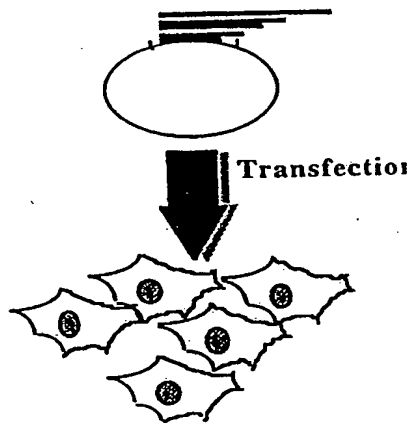


Fig.4



002090" FEF98560

Fig.5

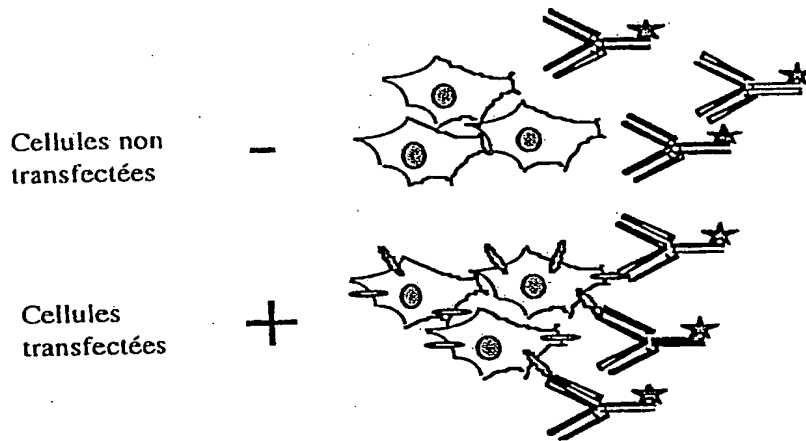


Fig.6

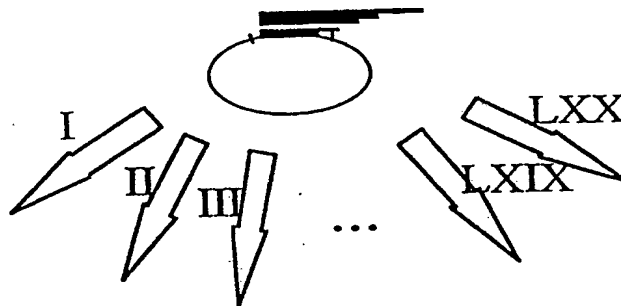
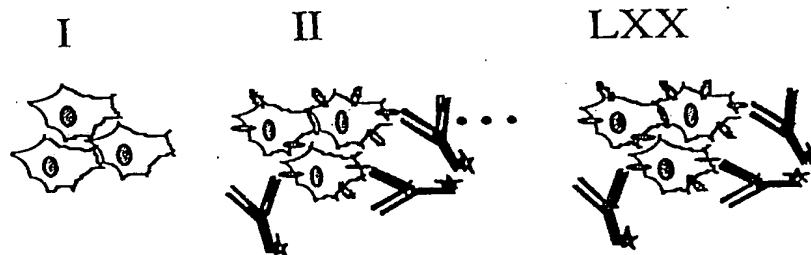


Fig.7



002090" TET 98560

Fig. 8

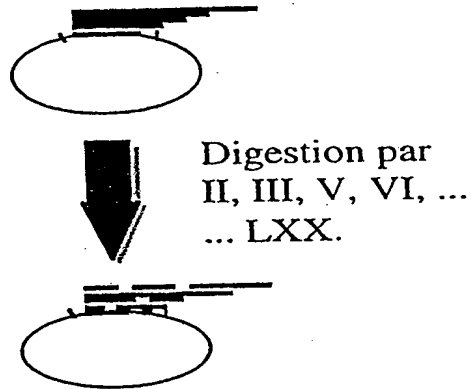
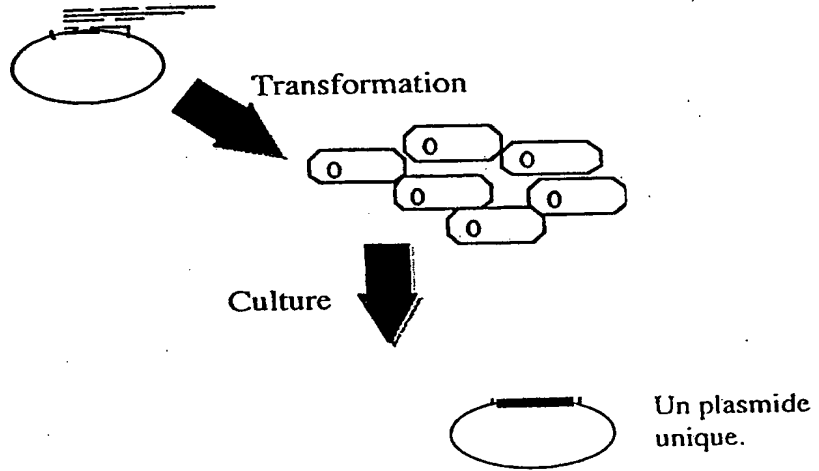
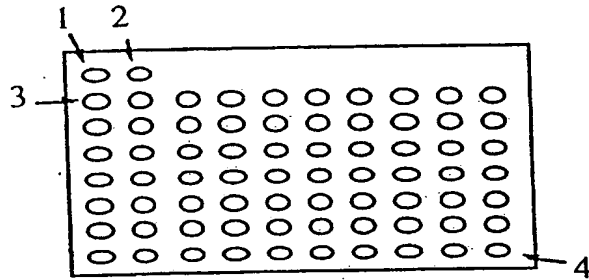


Fig. 9



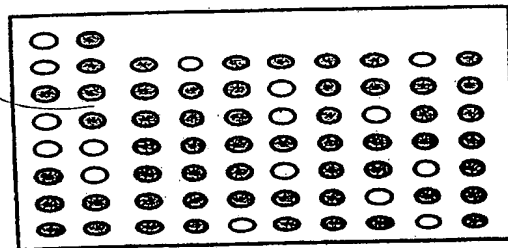
002090" FET98560

Fig. 10



- 1: Extrait cellulaire de cellules non transfectées.
- 2: Extrait cellulaire de cellules transfectées par la banque totale.
- 3: Extrait cellulaire de cellules transfectées par la banque digérée par I.
- 4: Extrait cellulaire de cellules transfectées par la banque digérée par LXX.

Fig. 11



CEM: I<sup>s</sup>II<sup>r</sup>III<sup>r</sup>IV<sup>s</sup>V<sup>r</sup>VI<sup>r</sup>...LXIX<sup>s</sup>LXX<sup>r</sup>.

002090" FEF98560

Fig.12

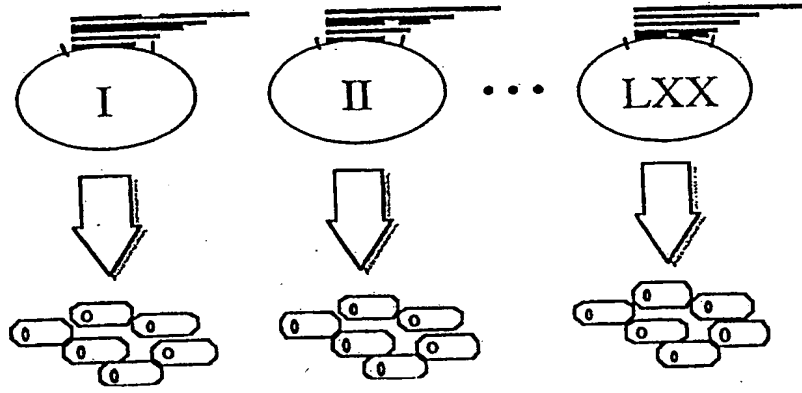


Fig.13

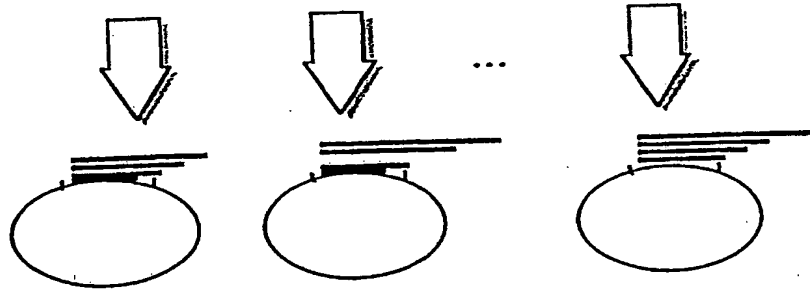
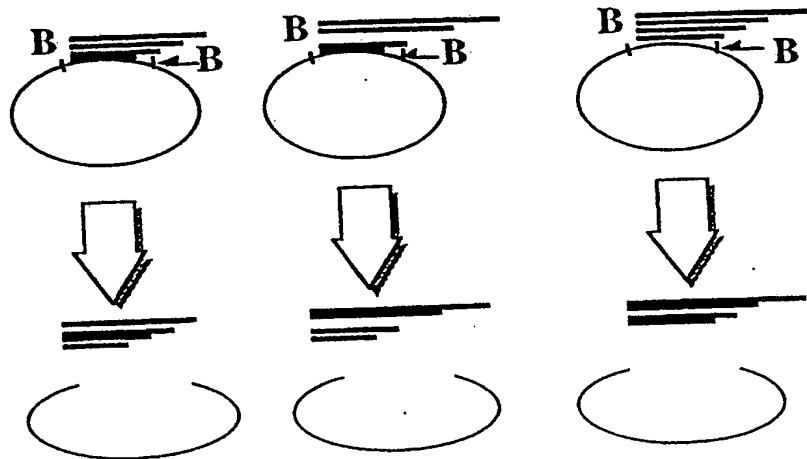
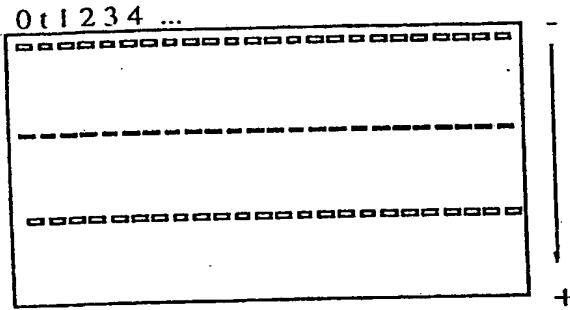


Fig.14



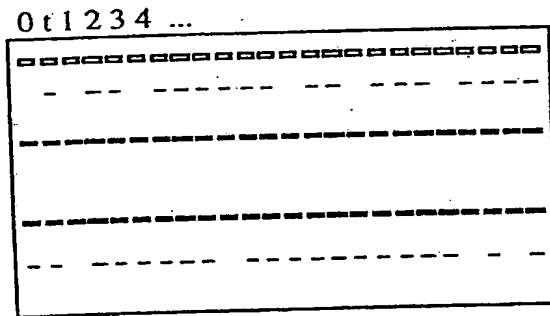
002090 FEF98560

Fig.15



0: Plasmide seul (clivé B) t: Banque totale.  
 1: Banque clivée par I. 2: Banque clivée par II.

Fig.16



CEM: I<sup>s</sup>II<sup>r</sup>III<sup>r</sup>IV<sup>s</sup>V<sup>r</sup>VI<sup>r</sup>...LXIX<sup>s</sup>LXX<sup>r</sup>.

002090" TEF 98560

Fig.17

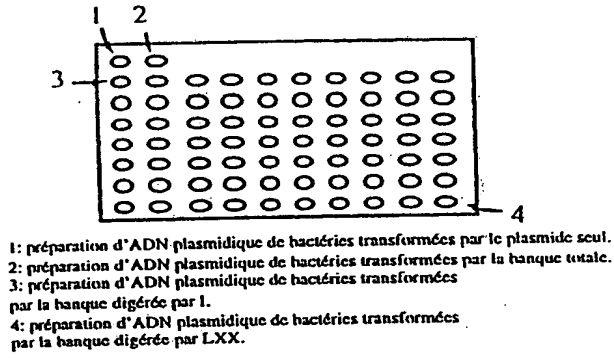
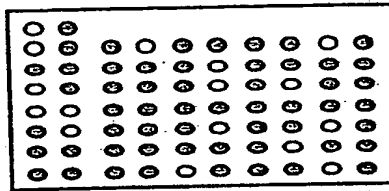
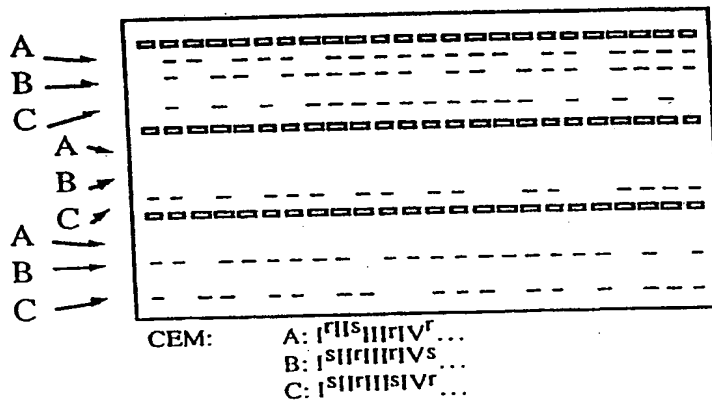


Fig.18



CEM: I<sup>1</sup>I<sup>1</sup>I<sup>1</sup>I<sup>1</sup>V<sup>1</sup>V<sup>1</sup>...LXIXLXX<sup>1</sup>.

Fig.19



002090 "TEL 9850